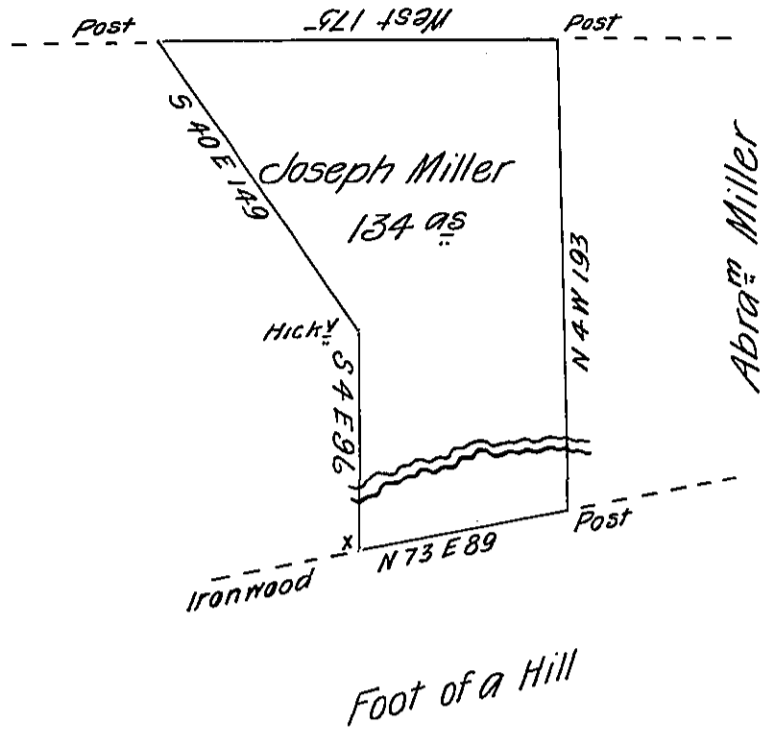


- Mussers land



The Draft of a tract of land containing one hundred & thirty four-and allowance (being part of a larger tract) Situate on Pine Creek a branch of Penns Creek in Haines township Northumberland County Originally Surveyed 18th August 1773 In pursuance of an order of Survey to George Shoemaker dated 1st August 1766. No 296.

Frd Evans

Daniel Brodhead Esq: S.G:

N.B. The above division was made by the general consent of the Heirs of Henry Miller deceased & ^{the} above part allotted to Joseph Miller
Certified this 16th February 1799

Frd Evans

IN TESTIMONY that the above is a copy of the original remaining on file in the Department of Internal Affairs of Pennsylvania, made conformably to an Act of Assembly approved the 16th day of February, 1833, I have hereunto set my Hand and caused the Seal of said Department to be affixed at Harrisburg, this second day of January 1906.

Lea C. Brown
Secretary of Internal Affairs.